

West Hills Art League

NEWSLETTER

JUNE
2021

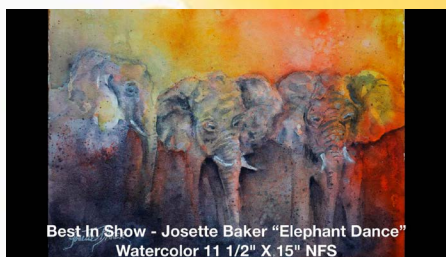
Next Meeting:
See You In September!

Virtual West Hills Art League Annual Mother's Day Show

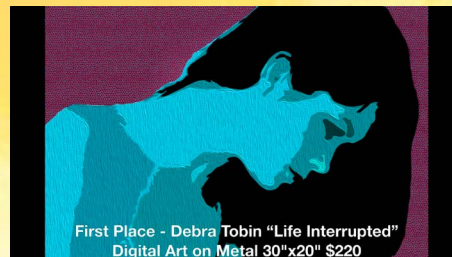
Our Judge, Diane Pontoriero, reviewed digital images and selected the award winners. There were 62 entries in the show which was shown as a live video presentation on Sunday, May 9th. It was a great opportunity for the artists to share their creations. If you missed it, the show is now posted on the WHAL website, Facebook page and YouTube channel.

<http://www.westhillsartleague.com>

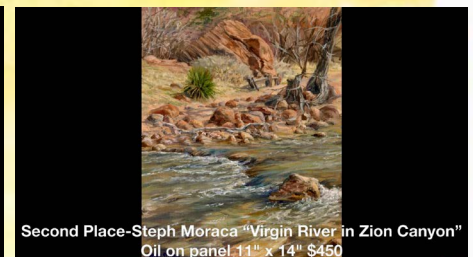
<https://www.youtube.com/watch?v=z4JRzqQN0wQ>



Best In Show - Josette Baker "Elephant Dance"
Watercolor 11 1/2" x 15" NFS



First Place - Debra Tobin "Life Interrupted"
Digital Art on Metal 30"x20" \$220



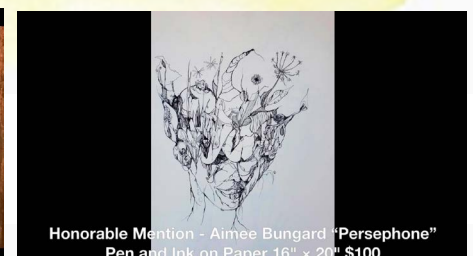
Second Place - Steph Moraca "Virgin River in Zion Canyon"
Oil on panel 11" x 14" \$450



Third Place - Cynthia Gilbert "Heaven's Reflection"
Pastel 9" x 12" \$350



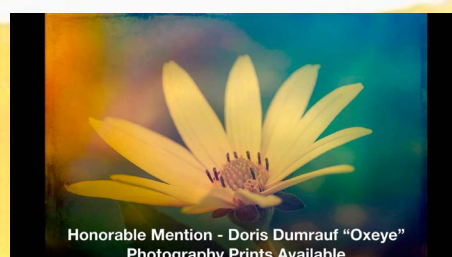
Honorable Mention - Lance Maloney "Bohemian Waxwings"
Acrylic 12" x 24" NFS



Honorable Mention - Aimee Bungard "Persephone"
Pen and Ink on Paper 16" x 20" \$100



Honorable Mention - Sally Sheffield "Orchids in Peach"
Watercolor 22" x 17" \$275



Honorable Mention - Doris Dumrauf "Oxeye"
Photography Prints Available



Honorable Mention - Lynda Kirby "Mountain of Trash"
Digital Art 10" x 8" \$150

We have a tie! Congratulations to this year's West Hills Art League Mother's Day Exhibit People's Choice Award recipients Neelam Dwivedi for "Algorithmic Injustice" and Lance Maloney for "Bohemian Waxwings"! Thank you to everyone who voted!



June Artist Spotlight

Ralph Bonnar



Ralph Bonnar was born in Pittsburgh on January 9, 1945, and has lived in North Fayette Township for over 50 years. Ralph studied commercial art and fine art at Universal Art Academy, CCAC, University of Pittsburgh and Robert Morris University.

While working, he spent 14 years as a commercial artist and 25 years in advertising sales. He retired from his newspaper career in 2005 after 33 years of service with the Beaver County Times and Allegheny Times.

Ralph enjoys working in all types of media, including oil, acrylic, water color, pastel, colored pencil and more. All of his artwork is one-of-a-kind with no reproductions or prints.

To view more of his artwork, log onto his website at bonnarartwork.wordpress.com.



CHIANTI
12"x12" oil on stretched canvas.



SUNFLOWER AND BEE
16"x20" acrylic on stretched canvas.



KO OLINA LUAU
10.5"x13.5" water color.



MOON OVER MAJAVE
24"x18" oil on canvas panel.
(with frame 27.5"x21.5")



YELLOW TRAIL
5"x7" acrylic on canvas board.
(with frame 7"x9")



ONE PURPLE ROSE
14"x11" oil on wood panel with
acrylic Gesso coating.
(with frame 20"x17")



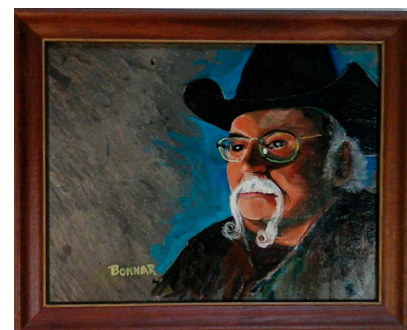
COLOR STORM
10.5"x11.5" oil on 100lb vellum.
(with mat and frame 14"x15")



FALL BRIDGE
14"x11" acrylic on stretched canvas.
(with frame and mat 15.5"x12.5")



SUNSET TRAIL
13.5"x10.5" tempera on 100lb vellum.
(with mat and frame 23.5"x19.5")

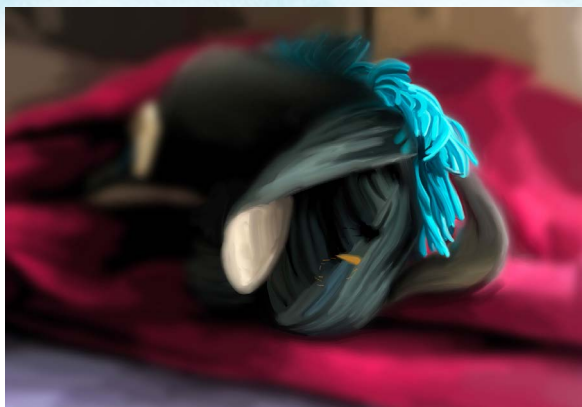


RON
13.5"x11" oil on slate.
(with frame 16"x13")

WHAL May Challenge: Paint A Memory



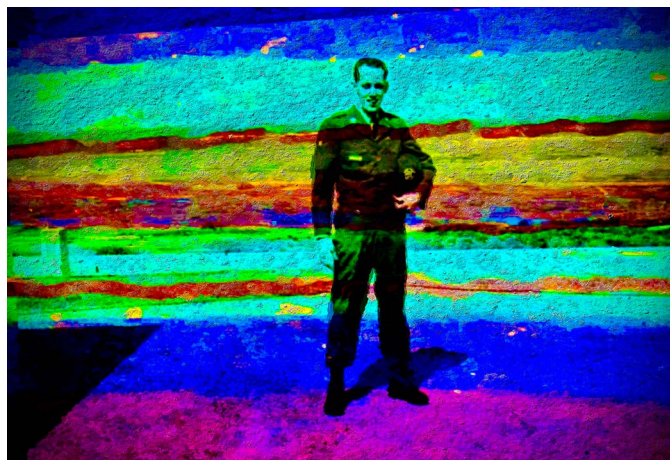
DEBRA TOBIN
"A FLOWER FROM GIGI HARRY"



LYNDA KIRBY "EEYORE"
DIGITAL FINGER PAINTING



RALPH BONNAR
"BLUE RIDGE HIKE"
OIL



JAMES TOBIN



HELENA VALENTINE
GRAMMA'S GOLDFISH MEMORY
WATERCOLO



NEELAM DWIVEDI
'LET ME GO!'

JUNE 2021
CHALLENGE:

The June Challenge is in honor of National Flag Day. Please create a piece of artwork that includes the American Flag. It can be the focus of the piece or a background element.

Email your submission to kirbycreativeservices@yahoo.com by June 30

Call for Artists

Cranberry Artists Network Martinis with Monet 2021 Art Expo

Show Dates: July 7 – August 19, 2021

Deadline for Entries: Wednesday, June 23rd, 2021,
no later than 11:59 pm

Opening Reception: Wednesday, July 7, 2021, 7:00-9:00 p.m.
Cranberry Township Municipal Building,
2525 Rochester Rd, Cranberry Township, PA

Open to all regional artists.
Over \$1000 in Cash Awards!

Certificates of excellence awards for First, Second, Third and
Honorable Mentions along with cash awards.

All applicants must register online via the Cranberry Artists
Network online form by Wednesday, June 23, 2021, 11:59 p.m.
<https://www.cranberryartistsnetwork.com/2021monet>

[Prospectus](#)

- Entrance fee for up to 2 pieces of art is \$20 for members of CAN and \$25 for non-members.
- For all entries, please send your entrance fee via PayPal or send a check to Cranberry Artists Network, PO Box 1876, Cranberry Township, PA 16066. (Please include your name as it appears on your submission.) All checks must be made payable to Cranberry Artists Network.
- No registration payments will be accepted during the drop off.

See prospectus for full entry details.

https://5391af05-b853-4267-aef9-4d74d7196cb3.usrfiles.com/ugd/5391af_585b13dc145c4328905b1c55379afa7d.pdf

Juror: Peggi Habets lives and works as an artist in her hometown of Pittsburgh, Pa. Her figurative and cityscape paintings have been exhibited and collected internationally and she has received awards in many prestigious shows, including the National Watercolor Society and the American Watercolor Society International Juried Exhibitions. You can visit Peggi's website to see her artwork and read her bio here:
<https://www.peggihabets.com/>

Fiberart International 2022 (FI2022)

Show dates June 3 - August 20, 2022
Submissions due August 31, 2021

[Application](#) will be done online via CaFÉ

[More information about applying to
Fiberart International 2022](#)

[Prospectus](#)

Plein Aire

All West Hills Art League members are invited to participate in our first Plein Aire get together for this summer at Moon Park's Nelson Pond on Thursday, June 17 6-9 pm.

The Nelson Pond, a long time favorite of our park visitors, was scheduled for a makeover in 2008. Years of sediment had eventually filled the pond to narrow water depths that threatened the fish population and created an unattractive facility. In Early 2008, the pond was drained and sedimentary material was removed. The shape and depth were reestablished and new amenities were added. The now completed project has around 500,000 gallons of water and is approximately 9 ft. deep in the center. It also has an accessible trail and benches for relaxing by the fountain.

PA Fish and Boat Commission
Rules and Regulations for the pond area:

- Catch and release only!
- Please, do not bring fish to the Nelson Pond. Certain species of fish with disease could destroy the entire fish population.
- No Swimming is permitted.
- No pets are permitted in the pond area or in the pond itself.
- Alcohol is not permitted.
- Follow all PA Fish and Boat Commission Fishing License rules and regulations.

www.moonparks.org/parks/moon.asp#

Call for Artists

Pittsburgh Society of Artists Guild New Membership Screening 2021

When

July 25, 2021
12:30 PM - 4:30 PM

Location:

Wilkins School Community Center 7604 Charleston Ave Pittsburgh, PA 15218



Applicants for PITTSBURGH Society of Artists membership are asked to submit three (3) original works completed within the last two years and not under direct instruction. Each applicant is assigned a number which is attached to each piece for the screening. Work is considered by members of the board of directors. Applicants are accepted by a two-thirds vote of board members present. Work must be finished and gallery-ready. Appropriate hangers and stands must be provided for three-dimensional work.

Drop off three (3) original works completed within the last two years to be considered 12:30-1:30 PM and return for pickup 3:30-4:30 PM. Works must be finished as appropriate for gallery hanging. Applicants will be notified of acceptance or rejection via mail. There is no fee for screening. If accepted, annual dues are \$40.00. Following are rough guidelines board members follow in evaluating submissions. These are based on generally accepted guidelines for judging art.

CONSISTENCY: The most decisive factor in judging a candidate for membership is the artist's ability to speak with a recognizable voice through their work. Consistency in style and medium allows an artist to showcase their talents in the particular area in which they are most accomplished.

VISUAL INTEREST: Visual interest is evaluated by looking at the strength of the work based on the elements and principles of art and design.

CONTENT: The work is examined with an eye towards originality, expression and meaning.

CRAFTSMANSHIP: Craftsmanship is rated according to the skill and degree of quality in the work and presentation.

Applicants must register for event to be considered for membership:

<https://pittsburghsocietyofartists.org/event-4324586>

Building Bridges ...



LAUREL ARTS 11th TRIENNIAL EXHIBIT

June 22-August 5, 2021

Opening Reception*

6-8 pm Friday, July 2

Whether those two words are seen as verbs or nouns, think of the positivity they suggest. How might your artwork reflect a spirit of uniting people, places, ideas, or suggest a particular concern for "divisions" you recognize?

To build is active, sometimes challenging work. To bridge means reaching out to get across, to link, to connect. What would your bridges look like? Are they existing structures, or perhaps even metaphorical with layers of meaning? What would you mend, bring together, or discard? The visual interpretation is up to you, with full license to explore your medium and imagination.

Artists are sometimes lauded as "shape-makers, symbol collectors, and entertainers," said Edgar Whitney, artist-teacher. You are invited to artistically support the theme by communicating a sense of "Building Bridges."

If you have questions, please call or email:

Phone: 814-443-2433

Email: gallery@laurelarts.org

www.laurelarts.org

WHAL Member News & Art Openings

A Tribute to Fellow WHAL Member Teri Greissinger



Theresa Margaret Greissinger
APRIL 26, 1941 - MAY 10, 2021

A Celebration of Life

HOSTED BY TERI'S FAMILY

A life so beautiful and expansive deserves a special celebration. You are invited to help us honor mom, so spare the sadness and tears and instead bring your stories, laughs, and happiness over a life that was lived to the fullest. We will gather at her home for a festive event to celebrate her memory. Beverages and light hors d'oeuvres will be served.

July 3, 2021
3:00PM

Segenweiden
2369 Springdale Lane
Sewickley, PA 15143

We appreciate the condolences and memories from all those who knew mom however for the safety of all fully vaccinated mourners only

RSVP
lkgreissinger@gmail.com

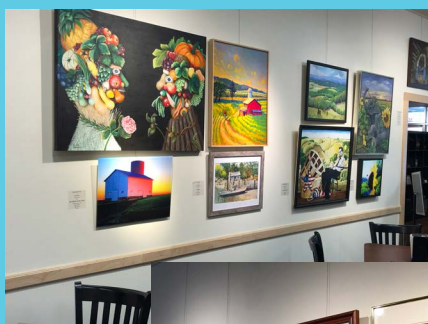
June 15, 2021

WHAL Virtual Show And Share Tues., June 1 @ 7pm

Stay connected this summer! Join our informal video chat session where members can show recent completed pieces or works-in-progress.

There will be opportunities for you to ask questions about someone's process and materials, or you could ask for input on something you are working on, or even just log in to get inspired.

It's a great opportunity to connect, collaborate or mentor



WHAL members **Lynda Kirby, James Tobin and Debra Tobin** exhibited art in the Latrobe Art Center Open Show. Lynda Kirby received an Award of Distinction for Photography/Digital art for her piece, "Mountain of Trash".

Congratulations to WHAL member **Steph Moraca** for winning the Westmoreland Arts Nationals Best In Show for her painting: Naples Sunset



Congratulations to WHAL member **Gina Judy** for her First Place award in the Associated Artists of Butler County 'Art Is... Show'.

WHAL Member News & Art Openings



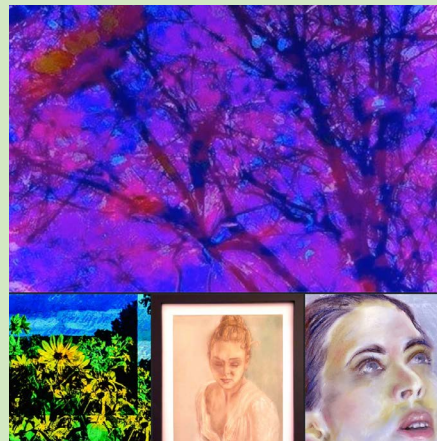
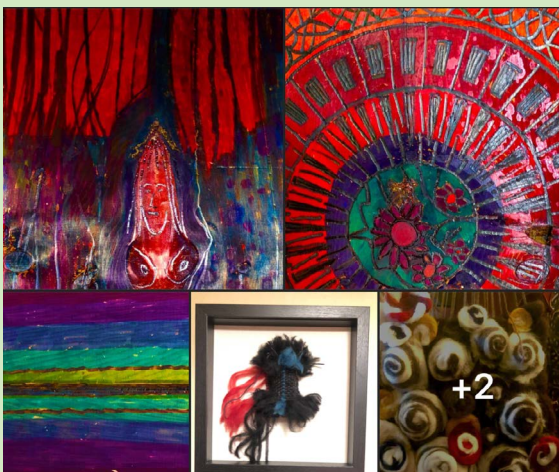
"Here is a photo of my hike in the Mar Lar Gorge of the Blue Ridge Mountains, North of the Tye River along the Appalachian Trail two weeks ago. I backpacked 75 miles in VA and PA.

Along the journey, I collected source material for new art compositions in 2021. The Mar Lar spur trail transverses large boulders that form this gorge where waterfalls cascade down the mountainside"

Josette Baker, West Hills Artist



Debra and James Tobin will be participating in the Hoyt Artist Members Show 2021. The show will be on display June 9 – August 1 at the Confluence, 214 E Washington St #3617, New Castle, PA 16101.



They are also participating in the North Hills Art Center Fire & Fiber Art Show. They will also be providing live music! Gallery preview is Friday, June 4, 6-8pm. Virtual Opening Saturday, June 5, 7-9pm. Show dates June 7 through July 2.

Gallery open M-F 10am-3pm, T 7-9pm.

Congratulations to **Debra Tobin** - her artwork: "Earth Mother" has been accepted to be exhibited at the O'Reilly Theater during Dollar Bank's Three Rivers Arts Festival this year as part of the Anthropology of Motherhood project. Exhibit dates are June 4 - 13.

Events and Shows

Life Drawing at Gilberti Fine Art Studio & Gallery

Sharpen your skills by drawing the human form in the company of fellow artists. We alternate both nude and costumed models. A voluntary critique follows each drawing session.

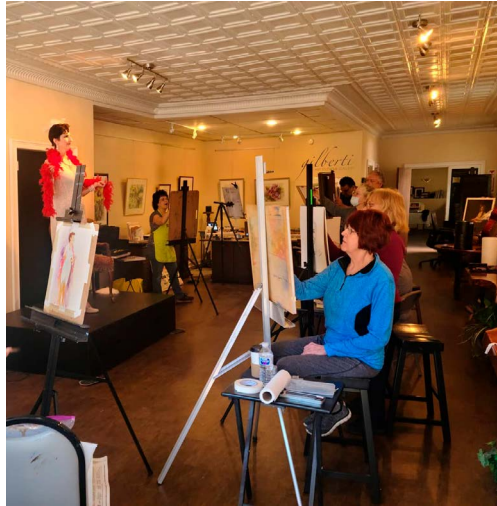
Tuesdays 10:00am - 1pm

Fee: \$20

* Email gilbertifineart@gmail.com to reserve your spot. Class size is limited.

Easels are provided. Bring your preferred drawing/painting materials.

<http://gilbertifineart.com>



gilberti
FINE ART STUDIO & GALLERY

The Anthropology of Motherhood project

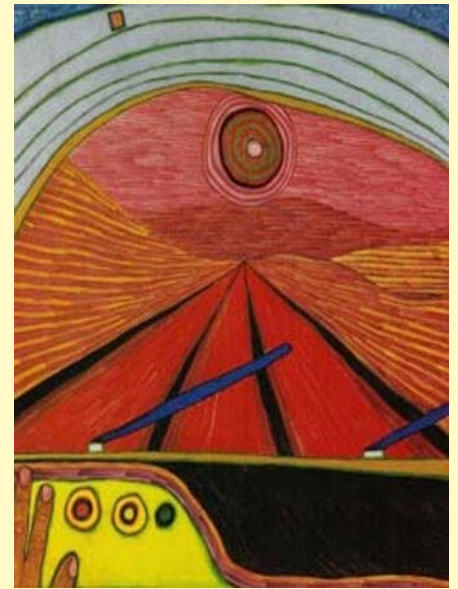
is showing selected works at the O'Reilly Theater from **June 4th-13th as part of the Three Rivers Arts Festival**. AOM is a functional, hybrid exhibition that is innovatively designed as both an art space, an interactive amenity, and a place of respite for families of young children.

www.anthropologyofmotherhood.com

A Picture is Worth a Thousand Words Photography Exhibit June 5-27 Butler Art Center

Associated Artists of Butler County announces the 2021 Juried Photography Exhibit, "A Picture Is Worth a Thousand Words", an exhibit dedicated to the inspiring and engaging eye of the photographer. The show runs from June 5-June 26. Artist reception June 5, 7-9pm.

butlerartcenter.org



Backroads: Art Less-Travelled June 5-27 Vestige Concept Gallery

Vestige Concept Gallery Presents: Backroads: Art Less-Travelled. This exhibit showcases works of art that venture off the beaten path, especially with regard to travel. Artwork could include places or experiences involving hidden gems, special or unusual places, wanderings, odd travel, strange encounters, and/or "lost" and fading places.

Events and Shows

Latrobe Art Center Annual Open Art Show

This exhibition will be on display at the Latrobe Art Center, 819 Ligonier St., Latrobe, PA, and online at LatrobeArtCenter.org through Saturday, June 5, 2021.

<https://www.latrobeartcenter.org>

Greensburg Art Center 2021 Biennial Juried Exhibition

Open Juried Exhibition
Now through June 25

<http://www.greensburgartcenter.org>



Westmoreland Art Nationals Juried Fine Art & Photography Exhibit

The Westmoreland Arts & Heritage Festival holds the Westmoreland Art Nationals exhibit will run from Saturday, May 22 through Wednesday, June 9, with the Opening Reception on May 22 from 6-8 PM.

The second exhibit will be held at the Westmoreland Arts & Heritage Festival on Thursday, July 1 through Sunday, July 4 with the Opening Reception set for Saturday, June 26 from 6-8 PM. Awards will be Announced at 7:00 PM on June 26 and posted on our Facebook page. Both shows are free and open to the public to attend.

<https://artsandheritage.com>

June 5-14

Three Rivers Art Festival

Pittsburgh Cultural District
(Not Point State Park or Gateway Center).

12 noon-8pm daily

This part online/part live event will include enhanced virtual presentations and select in-person, limited-capacity attractions.

<https://traf.trustarts.org>

August 28 & 29

24th Annual Shadyside...The Art Festival on Walnut Street

Saturday, 10am-7pm;
Sunday, 10am-5pm

150 exhibitors
For more info:
www.artfestival.com

September 10-12

A Fair in the Park Mellon Park

Adjacent to the Pittsburgh
Center for the Arts
Fri, 1pm-7pm;
Sat, 10am-7pm;
Sun, 10am-5pm

110 Exhibitors. In addition to the vast array of fine craft and art demonstrations, A Fair in the Park also features a children's activity area, regional and national entertainment, and a variety of Pittsburgh's fabulous foods.

craftsmensguild.org

Events and Shows



North Hills Art Center Fiber & Fire Show

The gallery (preview) opening is Friday, 6/4 from 6-8pm. The virtual opening will be the released on YouTube at 6pm on Saturday, 6/5. Show will run through July 2nd.

<https://northhillsartcenter.org>

Summer Solstice Raku Party June 20, 2021 6-10pm

Live Music With



PLUS... Summer Solstice Raku Party!

(FSunay, June 20, 6pm-10pm; see web site for additional info)

Free Admission & Parking for the Art Show & Raku Party!

West Hills Art League
P.O. Box 633, Moon Township, PA 15108

 www.WestHillsArtLeague.com  @WestHillsArtLeague

Send Social Media submissions to:
Cindy Gilberti • c.b.gilberti@gmail.com

Send Newsletter submissions to:
Lynda Kirby • kirbycreativeservices@yahoo.com

BOARD MEMBERS:

Debra Tobin - President debratobin@gmail.com
Kim Freithaler - Vice President / Programs kimartagain@gmail.com
Leah Shuck - Secretary leahshuck@gmail.com
Audra Zampogna - Treasurer twoaudra22@yahoo.com
Helena Valentine - Membership helenamvalentine@yahoo.com
Cindy Gilberti - Website / Social Media c.b.gilberti@gmail.com
James Tobin - Multimedia jamestobin@yahoo.com
Lynda Kirby - Publicity / Communications kirbycreativeservices@yahoo.com