

West Hills Art League

NEWSLETTER

**JULY
2021**

WHAL Virtual
Show And Share
Tues., July 6 @ 7pm

WHAL Plein Air Painting Event At Roselea Farm Sunday, July 18th starting at 9am

Please join us for this rare opportunity to paint at the beautiful and historic **Roselea Farm**. Located in Coraopolis Heights, this beautiful 1905 Tudor mansion is situated on a 32-acre estate and has many art inspiring areas. Choose from the gardens, main house, farmer's cottage, tower house, a large barn, a smaller barn, a commercial greenhouse and even a herd of goats!

Plus, we have invited artist and instructor **Douglas Wynn** to join us for the day to share some of his techniques.

We will meet at the big barn at 9:00am and Doug will give a brief talk on plein air painting and give some guidance. Then we will all break out and find our spots to work and he will be available for questions. If you have never done plein air before, this is the perfect opportunity to start! And, if you are already a seasoned plein air artist, don't miss this opportunity to paint at this amazing location!

So please pack a bagged lunch and plan to spend the day with us! We will have a supply of beverages available in the barn which is decorated with antique

furniture and often used for weddings and other events. Restroom facilities will be available. Ample Parking. This event is rain or shine. West Hills Art League Members - Free, Non-members \$5.00.

Please register by July 16th on our website:
<http://westhillsartleague.com> (click on "Workshops")

Douglas Wynn - Visual artist working in drawing, painting, sculpture, and everything in between. Student of art, aesthetics, beauty, and the sublime.
<https://www.facebook.com/douglaswynnartworks>



A Message from Nancy Mills

The gardens at Roselea Farm have evolved through the years. The original garden was The Formal Garden featuring roses. Now the garden is home to perennials and annuals. The original peonies still anchor the garden against the stone wall.

The Tower House Garden has become the daylily garden. A few years ago, I was gifted 18 varieties of daylilies and I planted them along the back wall of the wood shed. A huge storm destroyed the wood shed but the daylilies survived. This garden and the one to the rear of the main house have many of the original hostas.

The galley garden was constructed in 1920 and was built to support the wisteria as the focal point of the home. Over the years, the wisteria was covered with stones and shrubs and the structure was destroyed. Amazingly when we removed the stones and shrubs the original wisteria was still in the ground. So much for destroying wisteria!! Last year I added hydrangeas to compliment the garden.

The vegetable Garden is located next to the greenhouse. This garden was a challenge for us for years but we solved the problem three years ago with a sturdy fence. In 2019, we began to build raised beds to simplify our gardening, and in 2020, we added hay bale gardening. Last year was the first year for this endeavor. Overall, it was a success as I raised enough produce to can or freeze and we had many meals from the garden. I have gone a bit overboard with the artifacts but that is the story of my life!!

The History of Roselea Farm

In 1905, Pittsburgh attorney George E. Shaw (see below) commissioned the architectural firm of MacClure and Spahr to design a summer home on 123 acres in Coraopolis Heights. The result was the imposing twenty-one room Tudor mansion at what the Shaws called Tophorn Farm. The estate was purchased ca. 1916 by Charles Lockhart, who added four rooms and had a "farmer's cottage" built on the estate for the caretaker and his family.

When the Lockharts sold the estate in 1922, they subdivided the grounds, selling the mansion and 32 acres to David Crawford (see below), vice-president of Locomotive Stoker Company, who renamed the property Roselea Farm. In 1923, the adjacent 25 acres were sold to Lockhart's nephew, John R. McCune IV. The Lockharts retained 51 acres east of McCune's estate, and in 1927 they sold 15 remaining acres of the original farm to Lloyd Smith, president of Union National Bank.

Russell and Nancy Patton purchased the 32-acre farm in 1950, but the estate was condemned for lease purposes by the U. S. Government on behalf of the Air Force at the beginning of the Korean conflict, and the Pattons had to temporarily relocate. Forty-nine enlisted men were billeted in the main house, and the barn was used as an officers' club. The property was returned to the Pattons in 1958.

The Pattons' daughter and son-in-law, Nancy and Richard Mills, inherited Roselea Farm in 2003, and they have been restoring the grounds, gardens, main house, farmer's cottage, tower house and large barn ever since. In 2004, they added a herd of goats, a donkey named Rick and a third barn, as well as a commercial greenhouse, which is now open to the public. In 2007, the historic barn was renovated and restored, and the farmer's cottage was converted to a B & B.

This information is primarily from *Forgotten Past: A History of Moon Township, Pennsylvania*, by Robert A. Jockers (XLibris Corporation, 2006) and the Roselea Farm website, www.roseleafarm.com.

George E. Shaw (1861-1938)

George Shaw was born in Pittsburgh. He attended local schools, graduated from the University of Michigan, was admitted to the bar in Pennsylvania, and in 1881, along with Edwin W. Smith and Samuel McClay, joined the law firm founded by Philander Knox and James H. Reed in 1877. This firm handled the affairs of many of Pittsburgh's leading industrialists, including Carnegie, Frick, Mellon, Heinz and Westinghouse. In 1901, Mr. Reed represented Andrew Carnegie in the negotiations that led to the creation of United States Steel. In that year Philander Knox left the firm to assume the post of Attorney General of the United States, and later he would become a U. S. Senator and Secretary of State. The law firm, still in existence, came to be known as Reed, Smith, Shaw and McClay.

Mr. Shaw married Mary Elizabeth Ewing in 1893. She was the daughter of Judge Thomas Ewing, Jr., a real estate lawyer, civil war general, speculator in Kansas and key figure in national politics. Judge Ewing was a foster brother to William Tecumseh Sherman and later his brother-in-law, as Sherman married Ewing's sister Ellen.

Mr. Shaw was interested in business and civic affairs as well as the practice of law. He was a Director and Secretary of Crucible Steel company, Director of the Pittsburgh and Lake Erie Railroad, Director of Mellon National Bank, Union Trust Company and Union Savings Bank. He was a Trustee of the Carnegie Institute of Technology and served for many years as Chairman of the Fine Arts Committee of Carnegie Institute.



July Artist Spotlight

Melissa Tai



Blue Heron Flight



The Hope Of Spring
- Imagined Woods Series



Imagined Woods Series II

I am an adult taught artist, continuously improving by studying under other accomplished artists. A life-long creative, I have always found vents for my creativity: writing, crafting, gardening, cooking (no recipes here), and the list goes on. For professional endeavors, I choose watercolor. I love to take advantage of the flow and freedom of wet into wet, then allow it to dry to get more detailed. Experience reinforces that allowing the paint to do its thing is always the best bet.

I can be found teaching at a number of venues in and around Pittsburgh.

I fancy myself very approachable, recognizing that there are many 'right' ways to make art. Artistic marks are like signatures, unique to the individual. I like to introduce creativity to those who either think they can't or just haven't experienced the joy yet. If you are comfortable with your creative chops, I can offer a new project or perspective that will open your eyes to fresh opportunities.

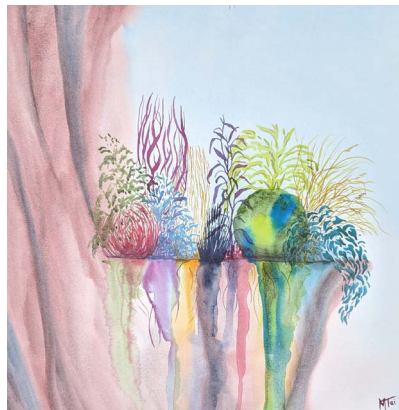
The pandemic offered a good amount of time for painting. However, stress and distractions made it difficult to focus on work the way I used to. Instead,

I embraced fast and loose paintings based on subjects I knew well, could paint from memory or most often - make up entirely. I used color more boldly and got a bit more abstract. It was great fun, and I think I will continue along with this route a bit longer.

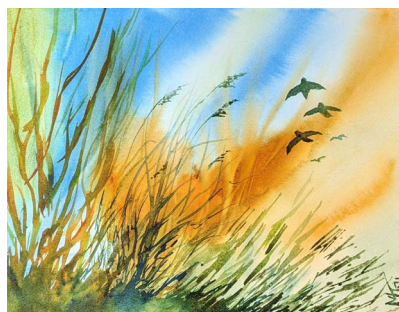
I also focused on the business side of things. First, I opened an Etsy shop last summer, later, I added a store to my own website - melissatai.com. In the future I would like to start a blog.



Slavia In Spring



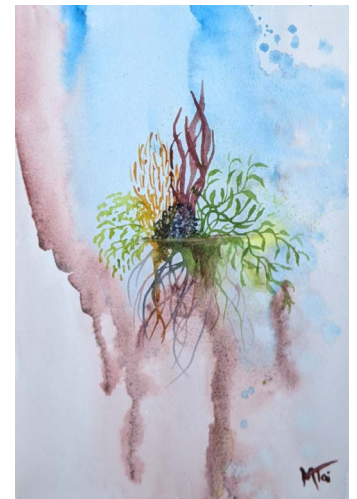
Cliffside Garden



Taking Off



Fireflies

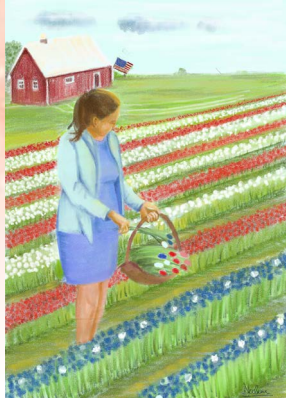


Floating Garden II

WHAL June Challenge: American Flag



Ralph Bonnar
FLAGS OVER MARCO ISLAND
12"x12" oil on stretched canvas.



Neelam Dwivedi



Josette Baker "Forever Free"
Watercolor and Gouache, 9" X 12"



James Tobin



Kelley Bush: "Self Portrait: Immigrant/Emmigrant", 2021
8-1/2 x 11 inches, Paper, pencil, pen and oil pastels

This simple self-portrait represents my love of both of my home countries, joined together as a heart-shape/sun and moon effect, both are symbols that occur frequently in my work. I am often pulled between my two countries, so the waves above the eyes represent a low-level worry that I have about one country or the other. The eyes look North, towards the side of the Sun, which is powerful here, and Moon, the softer side represented by the immense quantity of stars - including the Milky Way - that we can see at night here. The Sun's flames are balanced by the Moon's pull on the tides. Exploring some different line elements that intrigue me while representing the natural elements and beauty that I love, I find myself at 52 reconciling elements of the past to the present and future, cultures and lifestyles, observing, judging, forming opinions, and establishing a balance and equanimity between both.



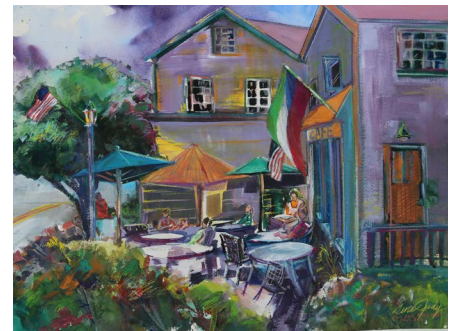
Maryanne Plump



Helena Valentine Photo Credit: Rome Sentinel
My hometown of Rome, NY was home to the B-52 bombers during the Vietnam War at Griffiss Air Force Base. During their take offs you had to stop your phone conversation while the doors and windows rattled on the house.



Debra Tobin - Long Shall She Wave



Gina Judy
"Storm Clouds Collecting Over Kennebunkport Corner Cafe"
- Acrylic/Watercolor on Paper



Sandra Beitsinger



Debra Tobin - Flags Abstract



Gina Judy



Lynda Kirby - American Girl

JULY 2021
CHALLENGE:

Summer Fun: Think picnics, bike rides, swimming, boating, fishing, camping, vacations to the beach, just relaxing in a hammock. What's your ideal summer fun?
Email your submission to kirbycreativeservices@yahoo.com by July 31.

WHAL Member News & Art Openings

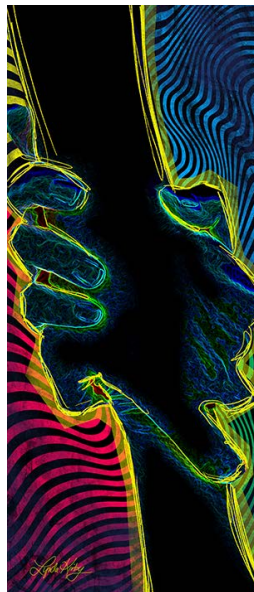
Congratulations to Steph Moraca for winning the Curator's Choice Award for 'Naples Sunset' at Westmoreland Art and Heritage Festival. Other members participating in the show are Gina Judy, Lynda Kirby, Leah Shuck, Alicia Stankay, and Debra Tobin.



WHAL members **Lynda Kirby, James Tobin and Debra Tobin** exhibited art at the LAUREL ARTS 11TH TRIENNIAL EXHIBIT. Lynda Kirby received a first place award for her piece, "Hold On".



Debra Tobin
"Weaving Cultures Global Tapestry"



Lynda Kirby
"Hold On"



James Tobin
"Sound Bridge"



A GORGEOUS night for our first WHAL plein aire outing! **Kim Freithaler** and **Debra Tobin** worked with pastels and colored pencils while **James Tobin** dazzled them with his talents in the art of fishing and guitar.

WHAL Member News & Art Openings

Moon Township Garden Club 2021 Tour

Two Groups come together for an amazing event!
Two lovely days, eight beautiful gardens and twelve en plein air artists! Thank you to the Moon Township Garden Club for inviting the West Hills Art League to participate and thank you to all of the artists, including those from the WHAL, who set up and painted in the gardens on Saturday.

Participating artists:

Dianne Bauman
Cindy Gilberti (WHAL)
Leah Shuck (WHAL)
Reggie Madonna
Kathleen Marone
D. Zoe Shutka
Melissa Tai (WHAL)
Debra Tobin (WHAL)
James Tobin (WHAL)
Maddie Tyska
Rita Wilson (WHAL)
Douglas Wynn (whose father
was one of the early WHAL members)



Gina Judy received a Silver Award
in the Camelback Gallery Online
Shades of Purple 2021 International
Juried Painting Competition.

"I love doing figures and enjoy going to a particular gallery 40 minutes away that has drawing sessions where artists 'gather' not only for great fellowship with other artists, but obviously for the enjoyment of the process. I particularly enjoyed the costuming this lovely model had donned, and as she stood on the platform, she was close to the ceiling spotlight probably installed for still-life painting. Hence, the title "On-Stage Starlit" was born, since she seemed to be 'presenting' the feathers that she was wearing."

<http://www.ginajudyfineart.com>

Call for Artists



Ohio Valley Plein Air “Paint Out”

The Ohio Valley Plein Air Paint out will be hosted by Artworks Around Town on Sept 1, 2, 3, 4, 5th, 2021. The Paint Out is open to all interested artists who register and follow the guidelines described in this Prospectus regardless of ability.

Our purpose is to involve artists from beginners to professional plein air painters who have a passion for painting outdoors using many of the scenic views, historic architecture, and small-town USA venues within 20 miles of Wheeling, WV. This is a paint out only, with no workshops or demonstrations. Artworks Around Town is located in the old Centre Market building in the very historical center of Wheeling. We will have meet and greet events, exhibitions, art awards, and of course painting.

Synopsis: Five paint-outs over five days, painting a mix of scenic views, historic architecture, and small-town USA within 25 - 30 miles of Wheeling, WV. Each day, participants will visit a different venue: (Wednesday – Moundsville [Grave Creek Mound, Old Penitentiary, historical architecture, views of the Ohio River along the river bike trail], Thursday – Bethany College [small college/scenic/rural], Friday – Palace of Gold [Asian Architecture, beautiful Monet like gardens], Saturday – Oglebay Park [scenic/historical], Sunday – Downtown Wheeling, Centre Market Area [historical architecture, small town USA]

Registration Fee - \$40
\$55 after 7/15/21

For more information and registration, visit:
http://artworksaroundtown.org/?page_id=1822

Fiberart International 2022

Show dates June 3 - August 20, 2022
Submissions due August 31, 2021

[Application](#) will be done online via CaFÉ

[More information about applying to
Fiberart International 2022](#)

[Prospectus](#)

Pittsburgh Airport Area Chamber of Commerce Art Switch-out: Friday, July 23

The confirmed date and time for our long-awaited Pittsburgh Airport Area Chamber of Commerce Art Switch-out is **Friday, July 23**.
Drop off 9:00am to 12:00pm.

This is a great opportunity to get our pieces in front of fresh eyes as the chamber has been bringing in new business members and is now ready to resume meetings and events as things get back to normal!

We will need volunteers to take in the artwork and hang pieces. Please email us at westhillsartists@gmail.com if you are available.



THE
CHAMBER
PITTSBURGH AIRPORT AREA
Connected to the world.

Call for Artists

Pittsburgh Society of Artists Guild New Membership Screening 2021

When

July 25, 2021
12:30 PM - 4:30 PM

Location:

Wilkins School Community Center
7604 Charleston Ave Pittsburgh, PA 15218



Applicants for P I T T S B U R G H Society of Artists membership are asked to submit three (3) original works completed within the last two years and not under direct instruction. Each applicant is assigned a number which is attached to each piece for the screening. Work is considered by members of the board of directors. Applicants are accepted by a two-thirds vote of board members present. Work must be finished and gallery-ready. Appropriate hangers and stands must be provided for three-dimensional work.

Drop off three (3) original works completed within the last two years to be considered 12:30-1:30 PM and return for pickup 3:30-4:30 PM. Works must be finished as appropriate for gallery hanging. Applicants will be notified of acceptance or rejection via mail. There is no fee for screening. If accepted, annual dues are \$40.00. Following are rough guidelines board members follow in evaluating submissions. These are based on generally accepted guidelines for judging art.

CONSISTENCY: The most decisive factor in judging a candidate for membership is the artist's ability to speak with a recognizable voice through their work. Consistency in style and medium allows an artist to showcase their talents in the particular area in which they are most accomplished.

VISUAL INTEREST: Visual interest is evaluated by looking at the strength of the work based on the elements and principles of art and design.

CONTENT: The work is examined with an eye towards originality, expression and meaning.

CRAFTSMANSHIP: Craftsmanship is rated according to the skill and degree of quality in the work and presentation.

Applicants must register for event to be considered for membership: <https://pittsburghsocietyofartists.org/event-4324586>

FOR MORE INFORMATION CONTACT Gina T. Judy, Press Chair, PSA
740-282-7908



Associated Artists of Butler County announces, "The Art of the Bloom"

Artists have been enamored with nature's bloom for centuries. "The Art of the Bloom" enables the artist to continue this love affair in all arts media and in botanical arrangements. The exhibit runs from August 13- August 28. Artist reception August 14, 10am-12 & 7-9pm .
Deadline to apply: July 24, 2021
Artists are asked to apply online, submitting for jurying, up to 4 artworks created in the last 3 years and never exhibited at The Butler Art Center previously.

Artists submitting botanical arrangements will register up to 3 entries online. No images required.

All artworks and Dried & Preserved arrangements will be on display August 13- 28.

Fresh Botanicals will be displayed Friday August 13 & 14. Artists will be asked to pick up arrangements at the end of the closing reception August 14 as we are closed until Wednesday August 18.

Permanent Botanicals will remain on display for the duration of the exhibit.
Specifications: The exhibit is open to artists 18 years and older residing in the United States.

Artwork Categories (Cash prizes will be awarded):
Painting
Works on Paper
Photography
Sculpture

Botanical Categories: (Cash prizes will be awarded):
Permanent Botanicals
Fresh Arrangements
Dried & Preserved Arrangements
Botanical Sculpture- Incorporate organic materials in 3D Sculptural form

Deadline July 24, 2021
<https://www.cognitofirms.com/ButlerArtCenter1/ArtOfTheBloom>

Call for Artists

The North Hills Art Center presents...



Art for Animals Show

NHAC
NORTH HILLS ART CENTER

Call for Artists

Scan for more info



Juror: Christine Fondi

The Art for Animals Art Show is a juried animal themed show open to both professional & amateur artists, **ages teen-adult**. All 2D and 3D art media may be entered as long as the artwork has an animal/animals as the primary subject.

***PHOTO FEE: \$5 PER PIECE if NHAC takes the photo(s) of your piece(s) for the virtual show. Please email jpegs to info@northhillsartcenter.org labeled as follows:**

LAST NAME_TITLE_MEDIUM_PRICE
ex: SMITH_STREAM_OIL_300

Drop off:

July 6 – July 9, 10:00am - 3:00pm
July 6, 7:00pm - 9:00pm

Pick up:

August 9 - August 12, 10:00am - 3:00pm
August 10, 7:00pm - 9:00pm

Only recent work that has not been in a previous NHAC show may be submitted. Artists will be notified at drop off of any unaccepted entries. **Each piece must be ready for display or hanging with picture wire. Work with gallery clips or saw tooth clips will not be accepted.** No piece of artwork shall be substituted or removed until the last day of the show. Attach one of the tags below to each entry.

The NHAC is not responsible for damages, loss or theft to any piece during, or if left, after the show. Artwork not picked up after 30 days following show closing will become the property of the NHAC. The NHAC will take a 30% commission on any piece of exhibited art that is sold. A portion of the proceeds benefit local animal rescues as noted.

Art Show
benefits:
Pigsburgh
Squealers



Opening Reception
& Awards Ceremony

Saturday, July 17, 7-9pm

Virtual Show - 7/17, 7pm
(website & facebook)

Gallery open July 19 thru August 6
Mon-Fri, 10am-3pm & Tues, 7-9pm

Meet & greet adorable pigs
from Pigsburgh Squealers!

*Awesome Food!
Great People! Wonderful Pigs!*

3432 Babcock Blvd | Pittsburgh, PA 15237
412-364-3622 | info@northhillsartcenter.org
www.northhillsartcenter.org

Name: _____	Name: _____	Name: _____
Medium: _____	Medium: _____	Medium: _____
Title: _____	Title: _____	Title: _____
Price: _____	Price: _____	Price: _____



Fiber & Fire Show

Show will run through
July 2nd at the gallery
and on YouTube.

<https://northhillsartcenter.org>

Cranberry Artists Network Martinis with Monet 2021 Art Expo

July 7 - August 19, 2021

Opening Reception Wednesday, July 7, 7-9pm

The Exhibition Space: The Cranberry Township Municipal building,
located at 2525 Rochester Road, Cranberry Township, PA 16066.

Our signature show returns for 2021! Martinis with Monet is a well-attended and publicized event that is the highlight of the summer season in Cranberry Township every year. This exhibit showcases the enormous skill and talent of a broad range of regional artists.

LAUREL ARTS 11th TRIENNIAL EXHIBIT

June 22-August 5, 2021

Opening Reception*

6-8 pm Friday, July 2

This juried show features many artists with a variety of creative works communicating this year's theme, **"Building Bridges."**

June 22nd – August 5th, opening reception is July 2nd from 6 – 8 p.m.

www.laurelarts.org



Westmoreland Art Nationals Juried Fine Art & Photography Exhibit

The second exhibit will be held at the Westmoreland Arts & Heritage Festival on Thursday, July 1 through Sunday, July 4th.

Visit <https://artsandheritage.com>

Life Drawing at Gilberti Fine Art Studio & Gallery

Sharpen your skills by drawing the human form in the company of fellow artists. We alternate both nude and costumed models. A voluntary critique follows each drawing session. Easels are provided. Bring your preferred drawing/painting materials.

Tuesdays 10:00am - 1pm

Fee: \$20

* Email gilbertifineart@gmail.com to reserve your spot. Class size is limited.

<http://gilbertifineart.com>





Pam Wenger Weekend Watercolor Portrait Workshop

Saturday, Oct. 2 and Sunday Oct. 3 from 9am to 4pm

Pittsburgh Watercolor Society is delighted to present a Weekend **Watercolor Portrait Workshop** with Pam Wenger. Pam is a retired teacher who has won numerous awards from the American Watercolor Society (AWS), National Watercolor Society (NWS), Pennsylvania Watercolor Society, Pennsylvania's "Art of the State", and Baltimore Watercolor Society's Mid Atlantic shows. Pam's work has been featured in Splash Magazine, in Artist's Magazine, and she has worked with Charles Reid and Ted Nuttal. Pam's art can be viewed on her website at www.pamwenger.com and on Facebook at facebook.com/pamwengerwatercolor.



Pam Wenger
"connects with people through their expressions, their poses, their placement in a composition."

At the workshop, participants will learn to paint watercolor portraits in a spontaneous style that involves minimal layering and the use of transparent colors. Students should be comfortable with painting in watercolor, but do not need to have experience with portrait drawing or painting. Experienced artists may work freehand, but drawings printed on watercolor paper will be provided for all participants so that those who want to focus on the painting process without spending too much time drawing can do so.



As the workshop is cumulative and sequential, **participants must attend both Saturday and Sunday** of the workshop. (Friday evening attendance is optional.) CDC and state health guidelines will be followed during this in-person workshop. Also, Pam is an experienced Zoom workshop presenter who will mail all references and watercolor papers to participants in the event the workshop goes online.

Location:

Andrew Carnegie Free Library & Music Hall
300 Beechwood Ave., Carnegie, PA 15106
(Free parking on site at venue. Easily accessible from I-79, I-376, U.S. 22-30, PA routes 19, 50, 65, & 51)



FRIDAY, OCT. 1, 2021, 6:00 -9:00 P.M.

Meet the Artist / Wine & Cheese Presentation

Free for workshop participants,

All others: Suggested donation: \$10-\$15

COST FOR TWO DAY in-person WORKSHOP:

PWS Members: \$200, Non-Members: \$240

REGISTRATION AND PAYMENT IN FULL DUE:

Online: September 1, 2021, 11:59 P.M.

Mailed: Postmarked by August 25, 2021

To obtain the supplies list, workshop description, cancellation policy, accommodations, and/or to register and pay securely online:

<https://www.pittsburghwatercolorsociety.com>

QUESTIONS? E-mail:

Pwsworkshops75@gmail.com

To ensure your spot, you must register online.

PWS prefers online payment, but to pay by mail:

Complete and detach the form below. Mail with a check payable to Pittsburgh Watercolor Society. Address:

PWS Wenger Workshop c/o
Wilkins School Community Center
7604 Charleston Ave.
Wilkinsburg, PA 15218

PWS PAM WENGER Watercolor Portrait WORKSHOP

Name: _____

Address: _____

Phone: _____

Email: _____

Check one: ☐ PWS member \$200

☐ Non-Member \$240

Events and Shows

PITTSBURGH Society of Artists

FIFTY-FIFTH ANNUAL Exhibition

July 9 to August 28, 2021

Opening Reception:

Friday, July 9, 2021

6:00 pm to 9:00 pm

**Subject to Health Guidelines*

Brew House Art Gallery

711 South 21st Street
Pittsburgh PA 15203

Gallery Hours:

Thursday: 2 pm to 7 pm

Friday & Saturday: 11 am to 4 pm

NEW TIMES



PITTSBURGH Society of Artists

THE PITTSBURGH SOCIETY OF ARTISTS announces its FIFTY-FIFTH Annual Exhibition featuring the best of its 400-member group in the first major exhibit since the onset of the COVID epidemic. The exhibition will feature an opening reception with COVID-safe-snacks, on Friday, July 9, 2021 from 6 - 9 PM at THE BREW HOUSE Art Gallery in Southside.

The public is invited to the opening reception and/or to view the show at the Brew House through August 28, 2021. An ekphrastic event is scheduled for July 29, from 6-8 PM as well. Gallery hours are Thursdays 2-7 PM, Fridays and Saturdays 11 AM-5 PM.

Juror Hannah Turpin is currently "Curatorial Assistant for Modern and Contemporary Art and Photography" at Carnegie Museum of Art, Pittsburgh, and has served in this capacity for seven-years. She holds a Master of Arts from New York University Institute of Fine Arts. Hannah has prior experience from the Brooklyn Museum of Art and the Leslie-Lohman Museum of Art. Hannah has curated numerous exhibitions at CMOA from photographic portraiture, film and video, to paintings. Her jurying and curatorial expertise extends throughout the Pittsburgh area, and nationally: the Barrett Art Center, University of Pittsburgh Press, Radiant Hall, Point Park University, The Persad Center, and more. Hanna states, "My process for identifying which works to include begins with an open-mind looking initially without a specific theme and giving every submission an equal chance. I am most concerned with both the quality of the work and the overall cohesion of the display."

FOR MORE INFORMATION CONTACT Gina T. Judy, Press Chair, PSA
740-282-7908

August 28 & 29

24th Annual Shadyside... The Art Festival on Walnut Street

Saturday, 10am-7pm;

Sunday, 10am-5pm

150 exhibitors. For more info: www.artfestival.com

September 10-12

A Fair in the Park Mellon Park

Adjacent to the Pgh. Center for the Arts

Fri, 1pm-7pm; Sat, 10am-7pm; Sun, 10am-5pm

110 Exhibitors. In addition to the vast array of fine craft and art demonstrations, A Fair in the Park also features a children's activity area, regional and national entertainment, and a variety of Pittsburgh's fabulous foods.

craftsmensguild.org

West Hills Art League

P.O. Box 633, Moon Township, PA 15108



www.WestHillsArtLeague.com



@WestHillsArtLeague

Send Social Media submissions to:

Cindy Gilberti • c.b.gilberti@gmail.com

Send Newsletter submissions to:

Lynda Kirby • kirbycreativeservices@yahoo.com

BOARD MEMBERS:

Debra Tobin - President debratobin@gmail.com

Kim Freithaler - Vice President / Programs kimartagain@gmail.com

Leah Shuck - Secretary leahshuck@gmail.com

Audra Zampogna - Treasurer twoaudra22@yahoo.com

Helena Valentine - Membership helenamvalentine@yahoo.com

Cindy Gilberti - Website / Social Media c.b.gilberti@gmail.com

James Tobin - Multimedia jamestobin@yahoo.com

Lynda Kirby - Publicity / Communications kirbycreativeservices@yahoo.com